



**Mile End** | Office Furniture  
EST. 1981

**Adelaide Showroom**

107 Henley Beach Road  
Mile End SA 5031

**Adelaide Contact**

8229 7676

**Darwin Showroom**

15/41 Sadgroves Crescent  
Winnellie NT 0820

**Darwin Contact**

0412 157 012

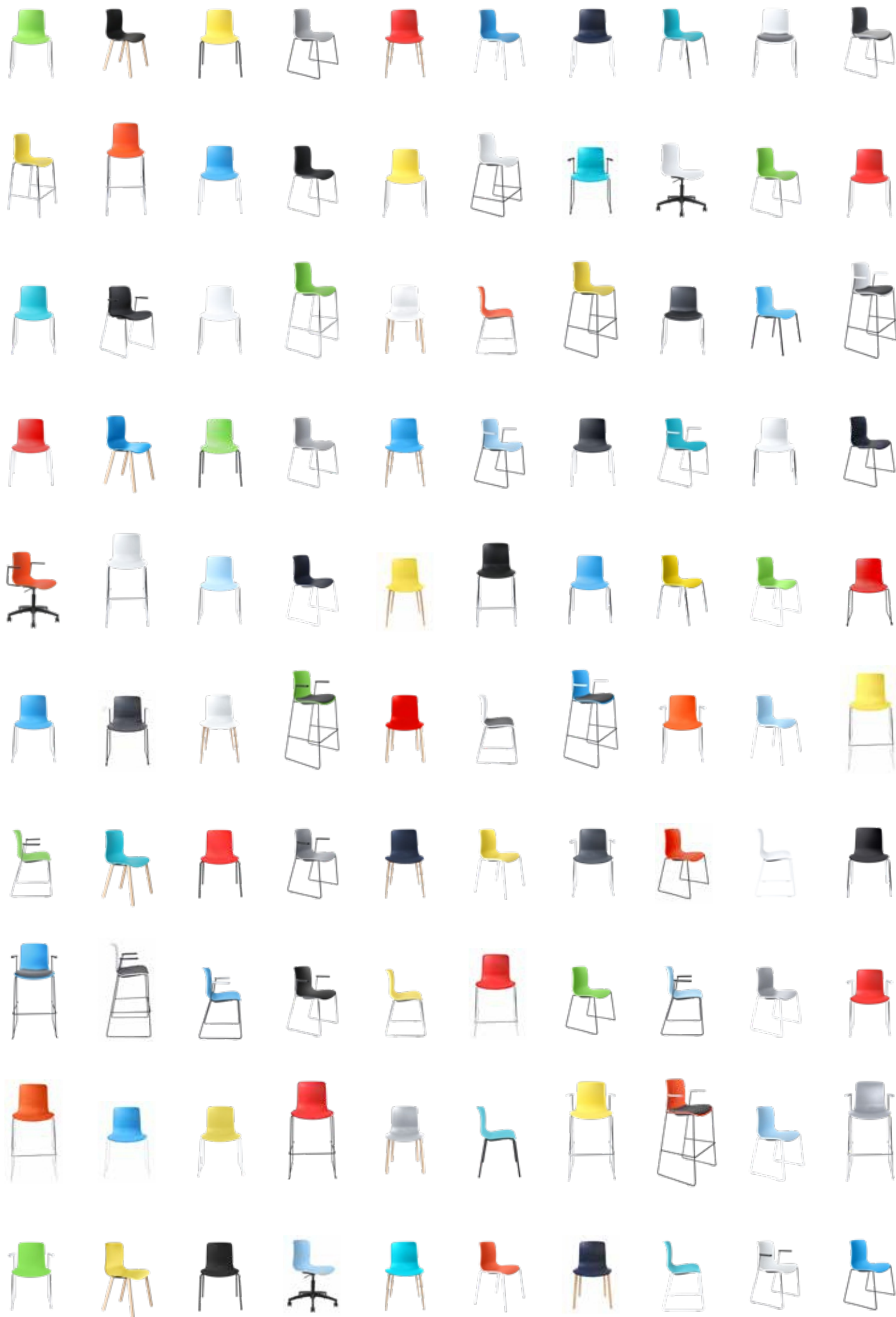
[sales@officefurniture.net.au](mailto:sales@officefurniture.net.au)

# ACTI

chairs



*love your work!*





# UNLEASH YOUR CREATIVITY

By you, for you. Customise your Acti to reflect your personality or project. Get creative with thousands of possible variations.





UNIQUE  
VERSATILE  
FUN





With multiple leg, shell and upholstery combinations you can customise an Acti chair to suit any situation. Whether it's for home, commercial, office or retail, Acti has a combination for you.



### Bringing movement to your workplace

With the Acti range we have continued to focus on our philosophy for seating with movement being a crucial element. The Acti has a flexible back, allowing the user to change their seating position whilst keeping the chair stable. The complete Acti range features 12 standard shell colours with others available for indent with MOQ's. As well as the great range of colours the Acti range has the added feature of upholstered seat pads and fully upholstered shells, we can do custom upholstery and custom powdercoat for projects, just contact us to find out details

Acti is a truly versatile range of seating for any visitor, guest or waiting area; libraries, training and seminar rooms; meeting and breakout areas; as well as restaurants, cafes or anywhere a comfortable, bright and practical chair is required.

# STEP 1

## CHOOSE YOUR SEAT



## SELECT YOUR SHELL COLOURS



Red(01)



Orange(02)



Pale Blue(06)



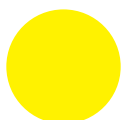
Ocean(07)



Light Grey(09)



White(12)



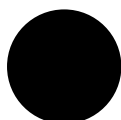
Yellow(19)



Charcoal(20)



Green(21)



Black(23)



Teal(28)



Navy Blue(30)



3

- 1. Shell only
- 2. Shell with seat pad
- 3. Fully upholstered

## SELECT YOUR UPHOLSTERY ( for seat pad and fully upholstered chairs)

Warwick Key Largo



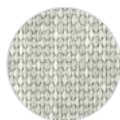
Ebony(60)



Slate(62)



Ash(64)

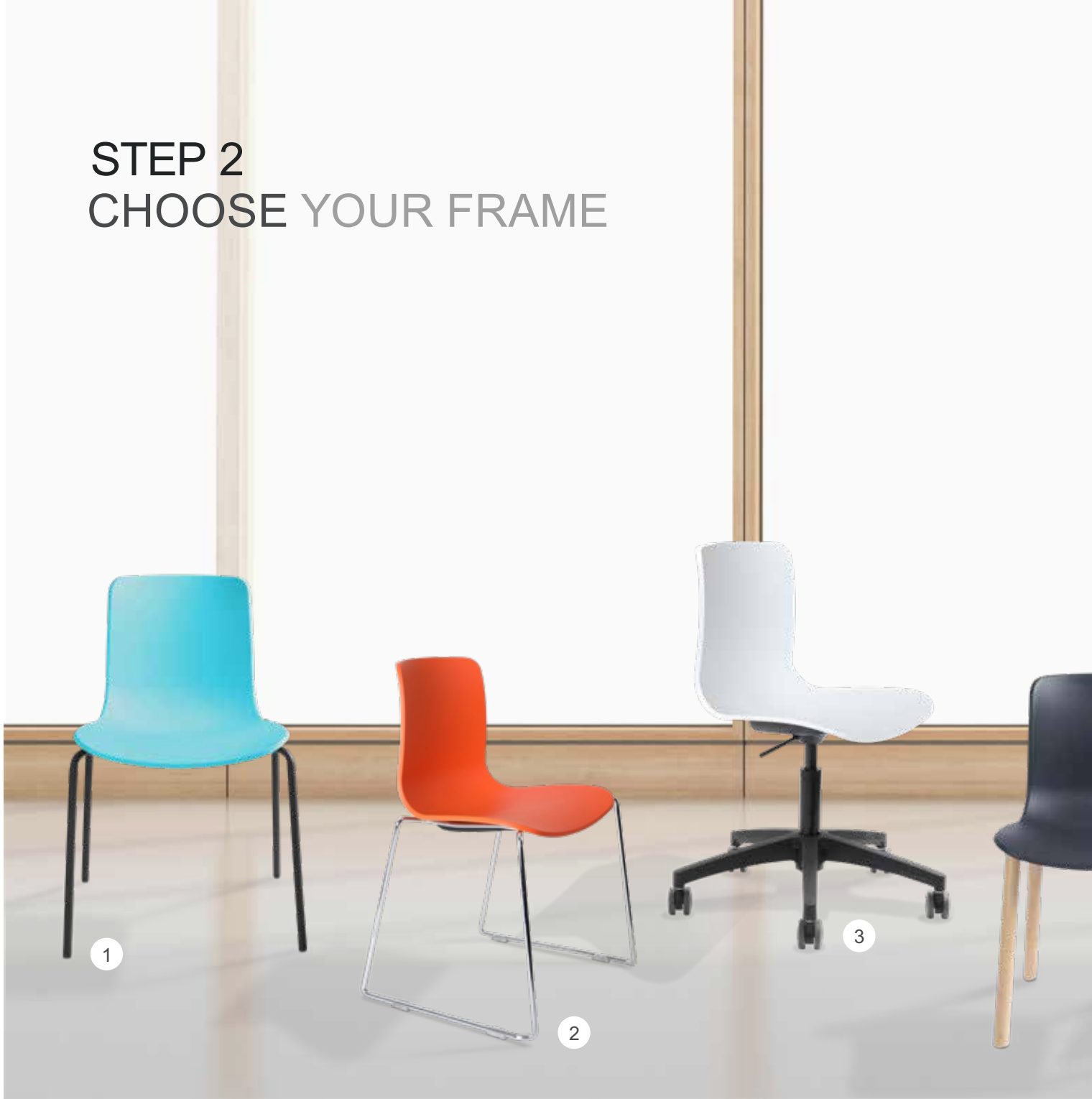


Frost(66)



Custom upholstery

## STEP 2 CHOOSE YOUR FRAME



## HUGE DEPTH OF RANGE

Tailor make Acti to suit your needs,  
with thousands of possible combinations  
you can design a chair unique to you.

### 1. 4 Leg chair

Finishes  
Chrome  
Black powdercoat

### 2. Sled chair: arms optional

Finishes  
Chrome  
Black powdercoat

### 3. Swivel task and drafting: arms optional

Finishes  
Black nylon  
Polished aluminium





4. 4 Leg chair timber

Finish  
Solid Beech

5. Low Sled bar stool

Finishes  
Chrome  
Black powdercoat

High Sled bar stool:  
arms optional

Finishes  
Chrome  
Black powdercoat

6. Low 4 Leg bar stool

Finish  
Chrome

High 4 leg bar stool

Finish  
Chrome

7. 4 Leg chair tapered leg

Finish  
Timber powdercoat

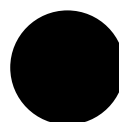
Frame Finish



Chrome



Solid Beech



Black  
powdercoat



Timbergrain  
powdercoat



Custom  
powdercoat

## STEP 3 CHOOSE YOUR ARMS



### Armrest Colours



Black



White



Light Grey

Note: Only for sled chairs, tall sled stool and swivel chairs.









See website for guarantee terms.





ASC



ASB



ARC



ARB



A5B



A4C



A4B



A4P



A4T



A5B-XX



AKC



AKB



AFC



AGC



A5L



ADC



ADB



ACC



ACB



A5L-XX

# UNLEASH YOUR CREATIVITY



	SIDE CHAIRS					
	4 Leg Chair (METAL)	4 Leg Chair (TIMBER)	4 Leg Chair (TIMBERGRAIN POWDERCOAT)	Sled Chair NO ARMS	Sled Chair WITH ARMS	
1 Seat height	445	445	445	445	445	325-555
2 Seat width	470	470	470	470	470	470
3 Back height	370	370	370	370	370	370
4 Overall width	540	480	540	560	560	600
5 Overall height	790	790	790	790	790	670-900
6 Overall depth	505	495	505	495	495	600
7 Seat depth	370	370	370	370	370	370
Weight Rating	150kg	130kg	130kg	150kg	150kg	110kg



SWIVEL CHAIRS			BAR STOOLS				
Swivel Chair WITH ARMS	Drafting Chair NO ARMS	Drafting Chair WITH ARMS	4 Leg Bar Stool LOW	4 Leg Bar Stool HIGH	Sled Bar Stool LOW: NO ARMS	Sled Bar Stool HIGH: NO ARMS	Sled Bar Stool HIGH: WITH ARMS
325-555	465-695	465-695	630	760	630	760	760
470	470	470	470	470	470	470	470
370	370	370	370	370	370	370	370
600	600	600	525	530	550	550	560
670-900	810-1040	810-1040	1000	1130	980	1100	1090
600	600	600	500	530	515	510	510
370	370	370	370	370	370	370	370
110kg	110kg	110kg	110kg	110kg	110kg	110kg	110kg

All dimensions in mm. Measurements are not absolute, small variations exist from chair to chair.



**Mile End** | Office Furniture  
EST. 1981

**Adelaide Showroom**

107 Henley Beach Road  
Mile End SA 5031

**Adelaide Contact**

8229 7676

**Darwin Showroom**

15/41 Sadgroves Crescent  
Winnellie NT 0820

**Darwin Contact**

0412 157 012

[sales@officefurniture.net.au](mailto:sales@officefurniture.net.au)